

Insch-Leslie-Premnay-Oyne

Parish Profile



Western Road
Insch
Aberdeenshire
AB52 6JR

Scottish Charity Number: SC000935

Mission statement:

Our aim is

- *to worship God*
- *to share in Christ's love and teaching in the community*
- *to be a friendly and welcoming church*

We are a friendly, outward-looking congregation. There is just one church now, serving the four parishes. Our previous minister decided to leave Parish Ministry and so we are looking for a Minister to work with us and lead us into the future.

We hope to find a minister who,

- has an inclusive approach and who is keen to engage with the schools, youth organisations and community groups.
- can inspire, lead and work with all age groups and who is willing to provide a supportive and visible pastoral presence in the community.
- can guide us in our mission and who is willing to work with other faith groups and especially those Churches in our Parish Grouping.
- can tackle outreach with enthusiasm, make the word of God accessible to all and who is willing to involve others in the act of worship.
- is empathetic to the needs of the community and can maintain the Church as a core part of the community going forward.

Insch

The village of Insch is a vibrant community which has grown rapidly in the last few years with an influx of new families (population approximately 2,400). It will continue to expand as more new houses are being built. It lies in the shadow of Bennachie and is within easy distance of the city, the coast and the mountains. It benefits from rail links to Aberdeen and Inverness.

There is a large primary school in the village (approx. 360 pupils, including a nursery). Secondary pupils have the choice of Inverurie Academy or The Gordon Schools, Huntly. There are Scouting and Guiding groups in the village as well as pre-school facilities. Many activities are offered by the local leisure centre.

There is also a full-time GP Practice, Health Centre and our War Memorial Hospital. The hospital is currently the focus of an energetic group working hard to have it re-open and raising funds for any building improvements that may be required.

There is a sheltered housing complex and a care home. As well as the church hall there is a community centre and a leisure centre. Inch has an attractive 18-hole golf course and a bowling green.

There are some very active groups in the community, working to enhance and improve life for village residents, these include a walking group, running and cycling clubs.

We have a part-time library, two mini supermarkets, a Post Office, a mobile butcher once a week, mobile fish vans, a baker, four hairdressers, a barber's shop, a pharmacy, DIY shop, upholsterers, veterinary surgery, accountants, a florist, three take-away food outlets and a Refillary with cafe.

The Church also works closely with the Bennachie Community Council, given that the Community Council boundary is co-terminus with the parish boundary. This is especially evident during local emergencies, such as Storms Arwen, Corrie and Malik. We also provide articles in the quarterly newsletter on what is going on the life of the Church as a way of reaching the widest possible audience.

The charge also covers the parishes of Premnay, Leslie and Oyne. The former churches and manses have all been sold.

Premnay

Premnay (also known as Auchleven) is a thriving village with a surrounding rural hinterland. There has been considerable new building, and the excellent village school boasts a roll of 46. The village has a very active Hall and Community Association which manages the Hall with potential providers of funding to support local interests and amenities. The Hall itself has a comfortable Heritage lounge which is suitable for small acts of worship, and it also displays the memorial stain glass windows removed from Premnay Church.

Oyne

Oyne is also a growing village with an active Residents Association, a thriving village school with a roll of 51 and a well-used village hall available for meetings and social events.

Leslie

Leslie is small settlement within a wide rural parish. Primary age children are zoned for Inch School. Leslie also has a Gallery and Picture Framing business on the outskirts of the village.

Opportunities

We have 297 members on the Communion Roll, 137 on the Supplementary Roll and 10 Adherents. Week by week we tend to have about 50 people worshipping. A new minister will have an opportunity to work with the Kirk Session to attract more regular worshippers across the age range. We are concerned that we are predominantly a mature congregation and Kirk Session, and we would wish the congregation to be more representative of the population as a whole.

Our church would benefit from strong leadership from a minister who could redress the problem of the small number of younger people joining us. We have established a Working Group to try some new and innovative ways of involving young people in the Church.

There is a very strong core of members willing to work with the minister to promote the Church as an active, vibrant place of worship that is there for everyone.

The response in the community to the events the Church has put on, such as the Doric service, Drama Production, Scarecrow Festival, Fun Week, Choir Concerts, Men's Prayer Breakfast, Fun and Friendship Club, St Andrews Night Supper and Doric Call My Bluff, Community Larder, shows the wish for a strong church in the community.

We are aware of the need to reach out to newcomers and to further grow pastoral links throughout the parish. We are keen to foster and expand our interactions with the other Churches in our Parish Grouping and our ecumenical links with the Episcopalian congregation at St Drostan's, Inch, and the Catholic Church of the Immaculate Conception, Inverurie.

We feel that due to the strong foundations that have been established, we are in a position to offer an exciting challenge to a new minister, and there are many good people here who will support the minister in the challenges ahead.

Church and Community

We endeavour to foster links with the whole community both in good times and bad. During the COVID-19 Pandemic the Church was at the centre of efforts to support the community, delivering medicine, shopping, making telephone calls to those living alone, providing meals to the elderly and vulnerable and the Minister held weekly Facebook Services from the Manse kitchen which were able to virtually link family members, for example a parent in Inch with a daughter in Australia.

In recent years we have hosted an open day, we regularly use the church for music events. Each year, the local Scout troop holds a carol concert in the

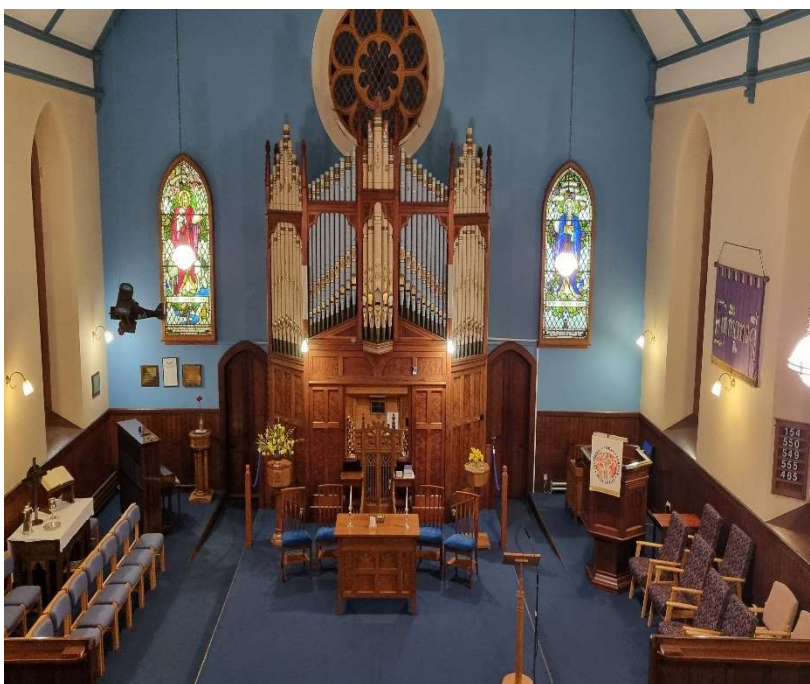
church, the Insch School holds an end of year service in the Church and followed by refreshments.

Hospitality is at the heart of our approach to outreach and community involvement. We have provided refreshments after Sunday Worship since 2006 and that includes a fabulous array of fancy pieces. We upgraded the Hall kitchen to catering standard so that we could provide meals to the elderly and isolated during the pandemic and adverse weather events. The kitchen also support's a small local business that does outside catering, including many of the funeral teas hosted in the Hall.

The Church also runs a Community Larder providing food to vulnerable local families experiencing financial hardship and on occasion support with energy costs.

During the winter storms in 2021 and 2022 the Church opened the Hall for a warm space and to let those without power charge their mobile phones and get a hot cup of tea. We also provided hot food and a light snack to those in isolated parts of the Parish who had no power.

Premises

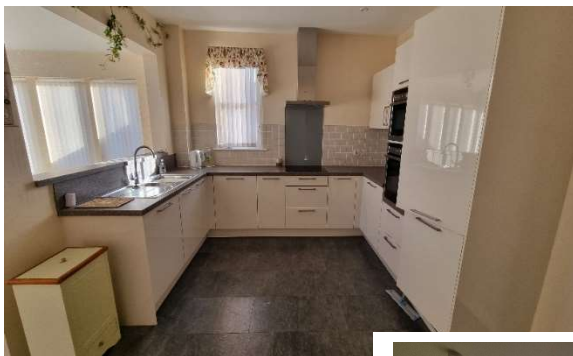


Our church building is in excellent order, and we are open to the possibility of refurbishing the back premises of a choir room and vestry into a modern office and comfortable meeting place. There is a superb, well-maintained organ, with we're pleased to report a regular organist and someone who can provide cover during holidays.

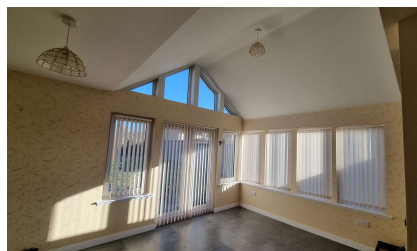


We have a good hall, with superior kitchen facilities and it is used by church groups as well as many other outside organisations with activities including Pilates, Yoga, Cubs, the local Bridge Club, Highland Dancing, Scottish Country Dancing, Tea Dances, Family Ceilidhs, birthday parties and funeral teas. Both the Church and the Hall have wi-fi connections.

The current Manse was built in 2015 at the edge of the village, with views over open farmland towards the hills of Foudland and Dunnideer. The new house was built to the highest standards by Drumrossie Land Development. It has an air source heat pump.



There is an open plan kitchen and dining area/sunroom, utility room, lounge, downstairs toilet, large office and separate reception room, which enables the Minister's family to maintain the privacy of family life.



There is a large lounge with a bay window and side window to let in plenty of daylight with neutral decoration.



There are 4-bedrooms, including a master with an ensuite and a family bathroom. There is a manageable garden and double garage.

Services

In addition to the regular Sunday morning service at 10.30am, there are regular monthly services at Foudland Court, the sheltered housing complex and Drumdarroch, the local nursing home.



We also have links with the three primary schools, Inch, Oyne and Premnay and we would like to work closely with the other denominations in the area. We are always keen to plan and participate in one-off special services. For

example, we have an annual Doric service with a number of members of the congregation contributing readings and poems.

Recently there have been 2 weddings and 10 baptisms and 15 funerals. The majority of the funerals are in the church, though some people in this area opt for services at the funeral chapel in Inverurie or the crematoria in Aberdeen, Crathes or Moray, albeit conducted by the Minister.

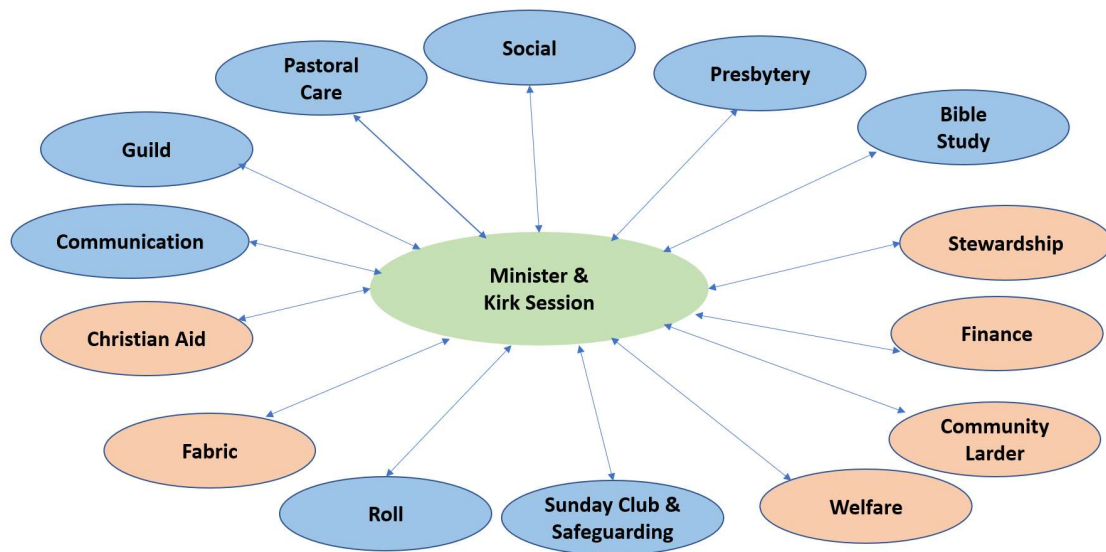
In September 2023 a Worship Planning Team was established to ensure that there was sufficient cover to conduct services, and this has meant that a number of services have been led by Elders, the Guild and the Bible Study and Prayer Group.

Session and Board

We are quite a small Session at present and a priority for our new minister will be the ordination of new elders. Despite being few in number we are an active Session and we have managed to keep things going through teamwork and willingness to do what it takes for the good of the congregation. Elders planned and led the Sunday services and the services at the nursing home and sheltered housing. We continue to support our Interim Moderator, and we look forward to working with our new minister.

We have a separate Board and Session, though we have had some discussion about moving to a unitary model. In the autumn, the Session and Board approved a move to a more Team based approach with a nominated lead for each activity in the diagram below.

Our Team



Our main source of income is voluntary giving, which has been decreasing in recent years, though we are in good financial health, keeping a careful check on expenditure and investments with the help of the local accountants and financial advisers.

Organisations and Groups.

We have a Guild, a Bible Study and Prayer Group and a Stewardship Committee all run by Elders. There is a small Sunday Club with a very wide age range and a Fun and Friendship Group that meets fortnightly.

We communicate at least twice a year to members through a letter from the Minister, although this is currently being done by the Session Clerk. We also send cards to members at Christmas with details of the services that will be taking place during the Advent Season.

Christian Aid

Our congregation works enthusiastically for Christian Aid Week each May, raising large sums of money. In addition to the distribution of the red envelopes we hold a soup and sweet lunch and other fundraising events. During Christian Aid Week we draw in many helpers who do not have regular contact with the church.

..... and finally

Under the recently approved Presbytery Plan, Inch-Leslie-Premnay-Oyne is part of a Parish Grouping, which includes the Parishes of Huntly, Cairnie, Glass and Strathbogie Drumblade.

There has been a long tradition of the Ministers of these parishes supporting one another due to their shared boundaries. This has taken the form of advice and support during the construction of the new Manse, the sharing of services and as recently as November the Minister from Strathbogie Drumblade conducted the Remembrance Day Service in Inch Church during the vacancy.

This will stand all of the Parishes in the Grouping in good stead as we move forward together.

Contact Details: Rev. Alison Jaffrey, Interim Moderator
ajaffrey@churchofscotland.org.uk
01651 891961

